

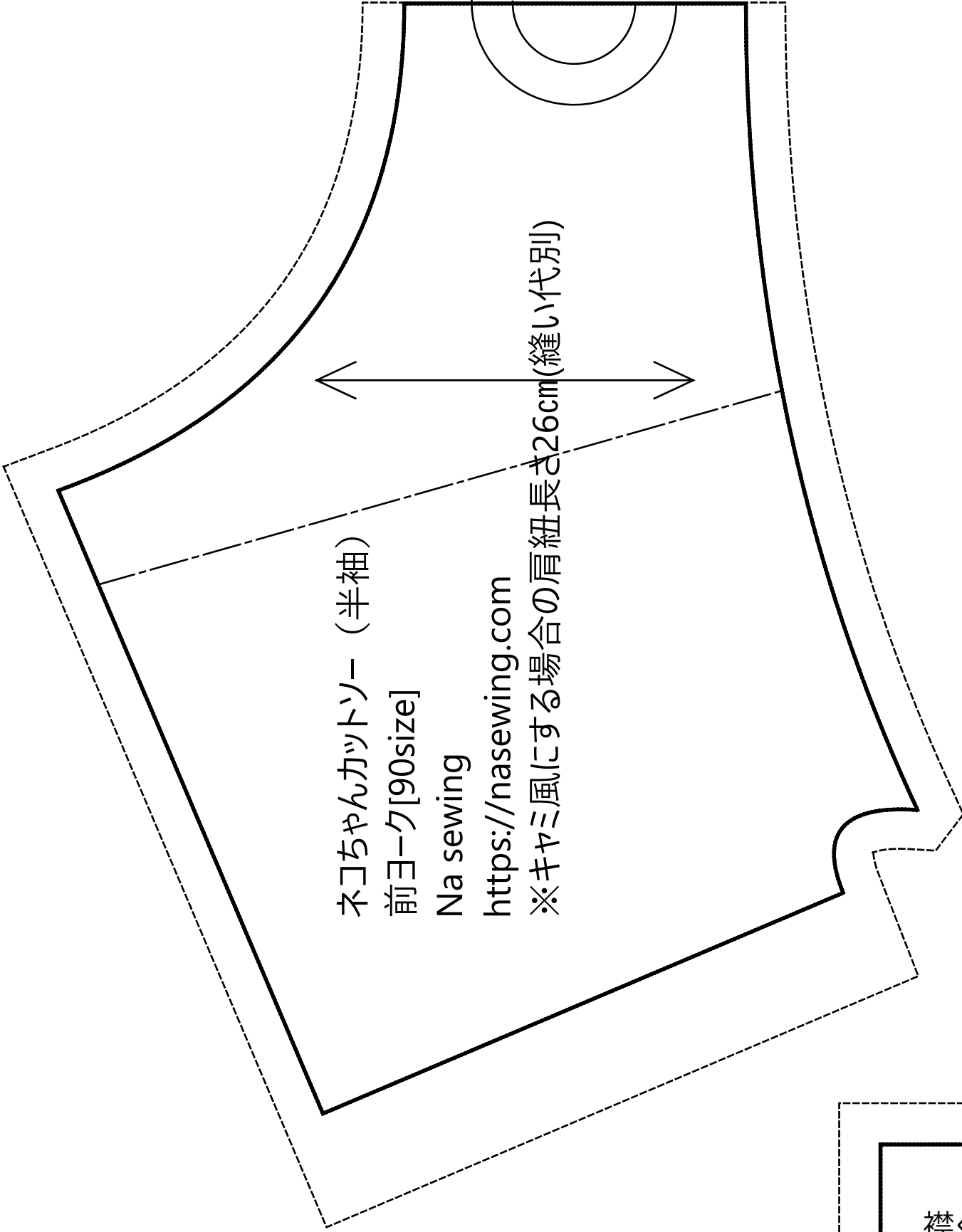
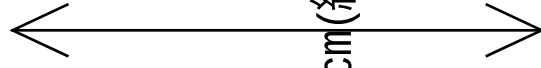
ネコちゃんカットソー (半袖)

前ヨーク[90size]

Na sewing

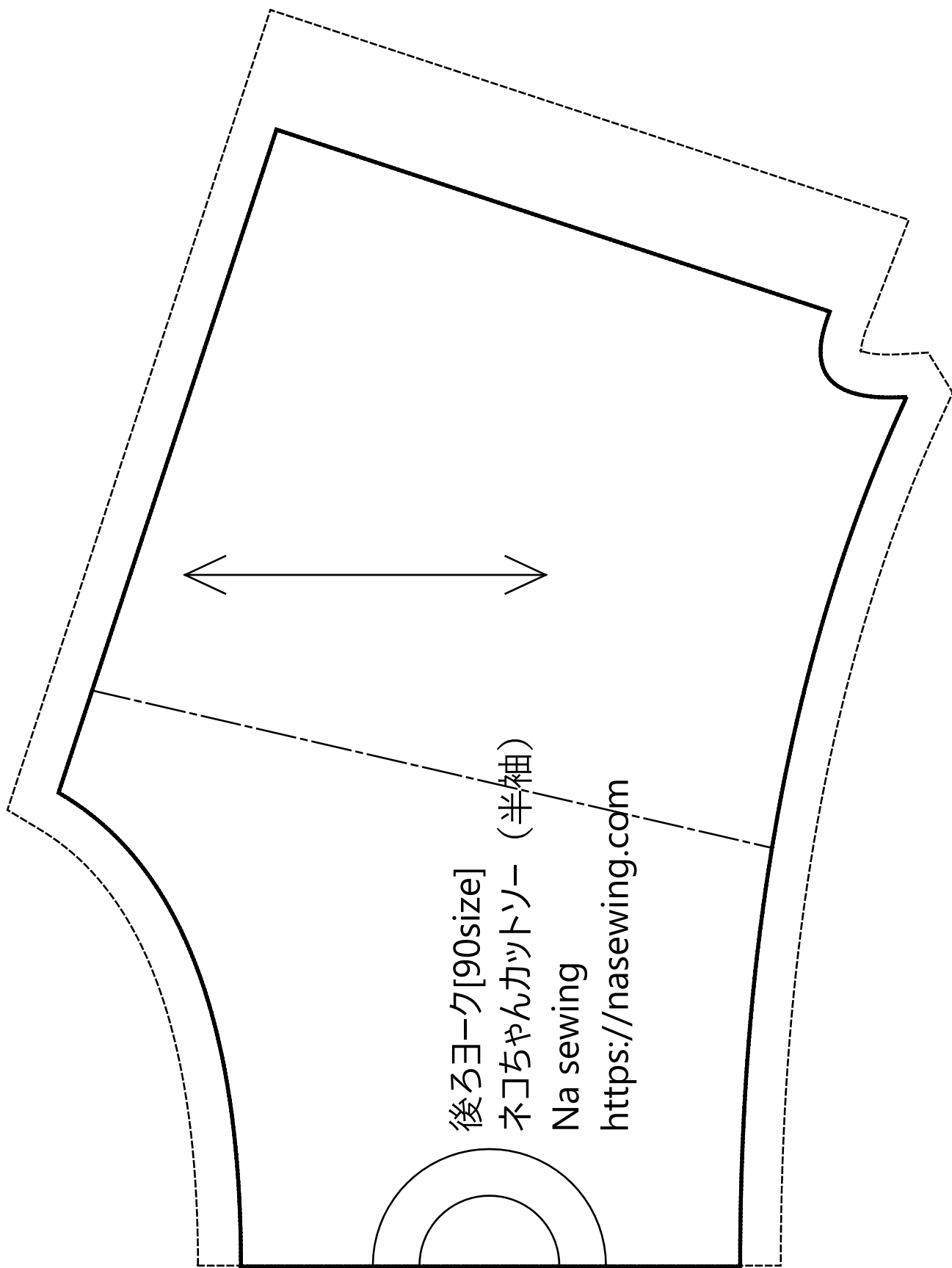
<https://nasewing.com>

※キヤミ風にする場合の肩紐長さ26cm(縫い代別)

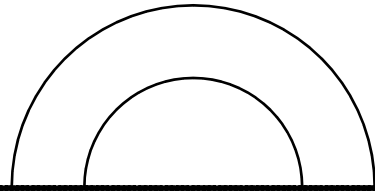


襟ぐりリブ
Nasewing

後ろヨーク[90size]
ねこちゃんカットソー (半袖)
Na sewing
<https://nasewing.com>



後裾[90size]
ネコちゃんカットソー（半袖）
Na sewing
<https://nasewing.com>




後ろ中心

肩

襟ぐりリブ ネコちゃんカットソー（半袖） [90size]

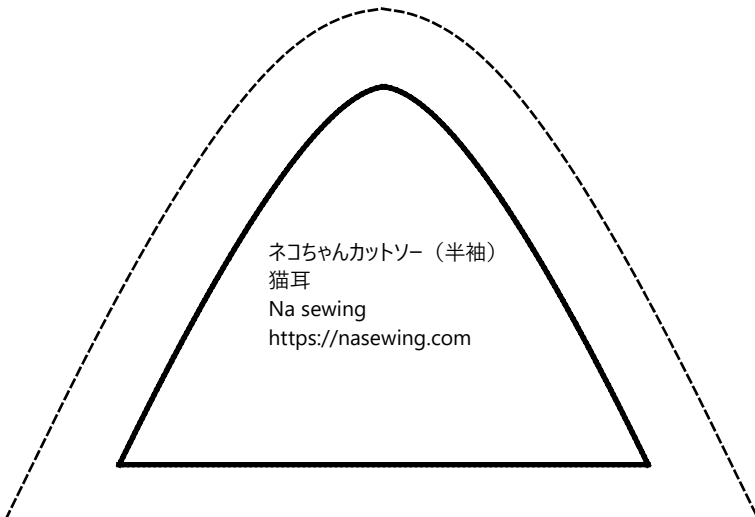
Nasewing <https://nasewing.com>



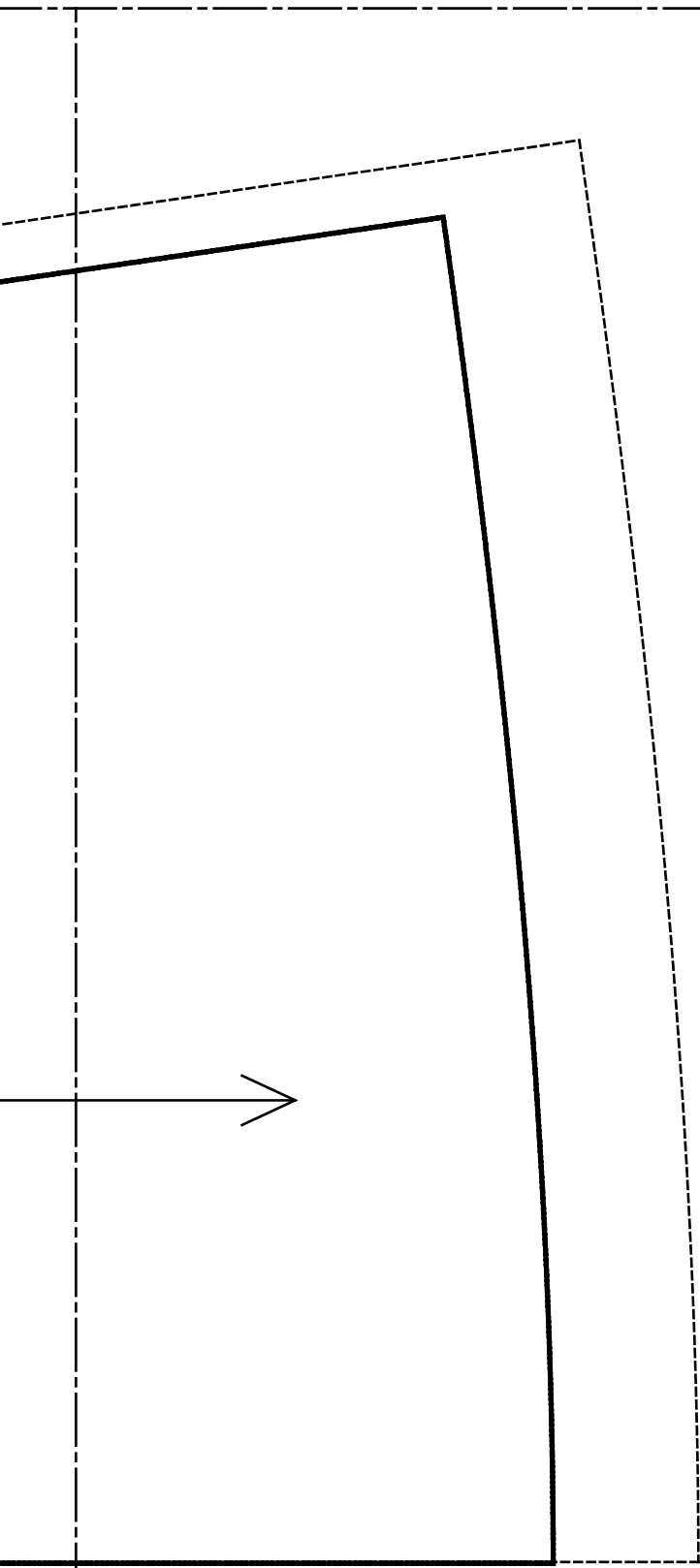
ネコちゃんカットソー (半袖)
前裾[90size]

Na sewing

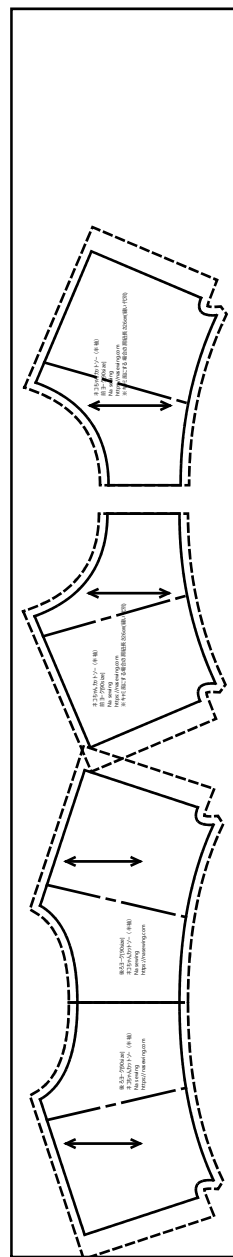
<https://nasewing.com>



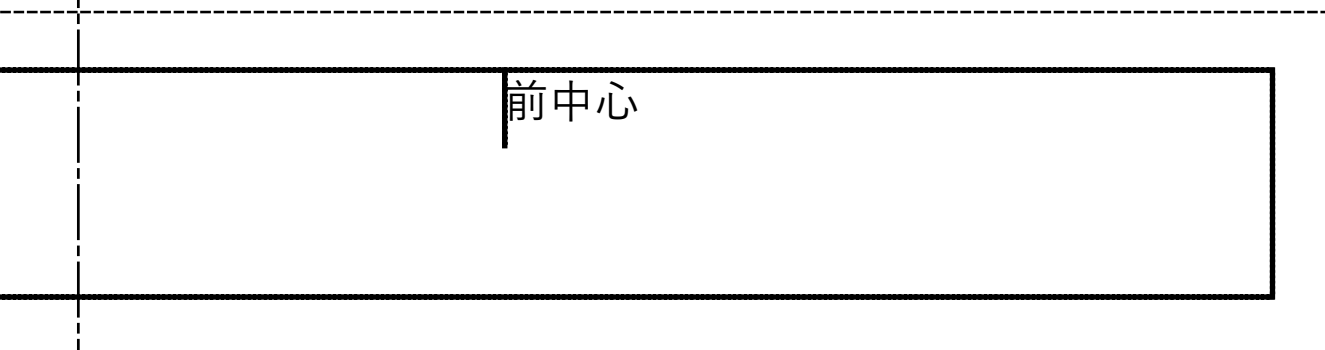
ネコちゃんカットソー (半袖)
猫耳
Na sewing
<https://nasewing.com>

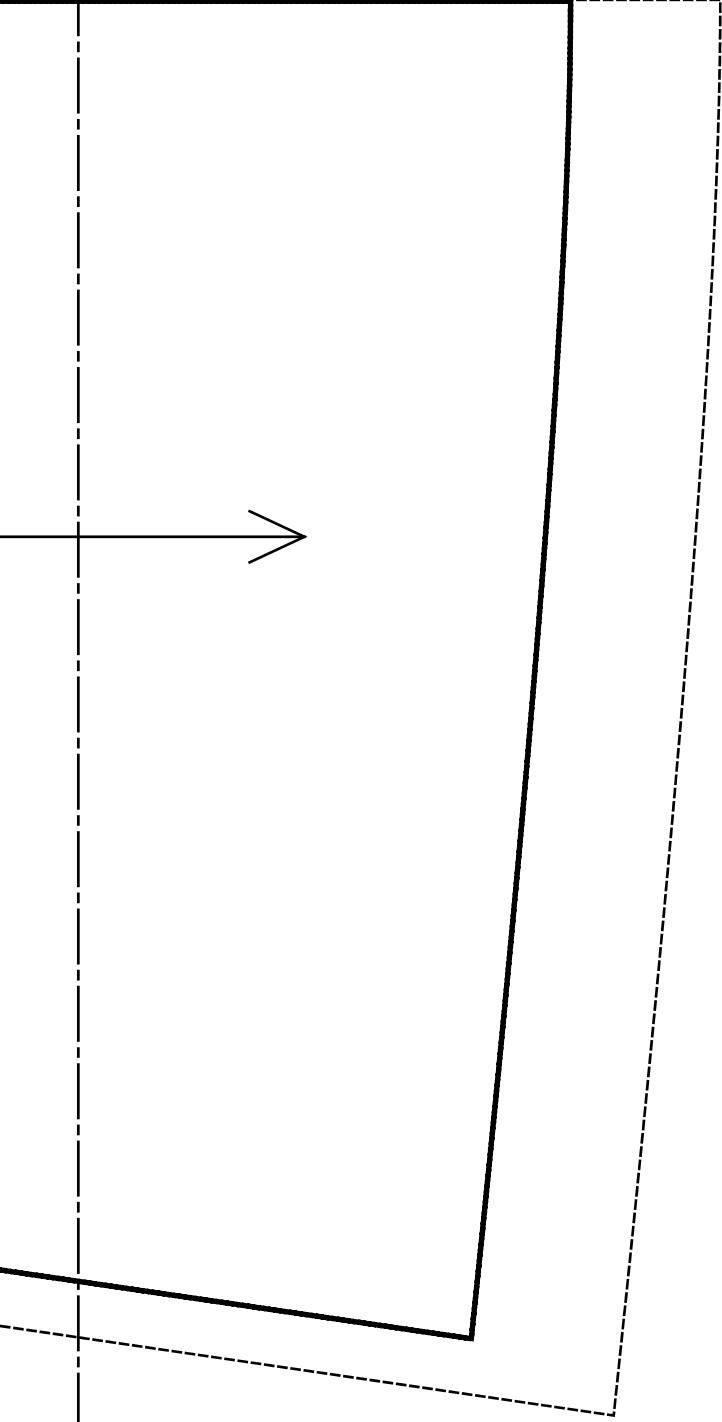


W:1100mm L:200mm



前中心





W:1100mm L:300mm

